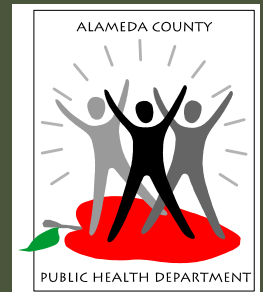


Addressing the Root Causes of Health Inequities through a Local Policy Agenda

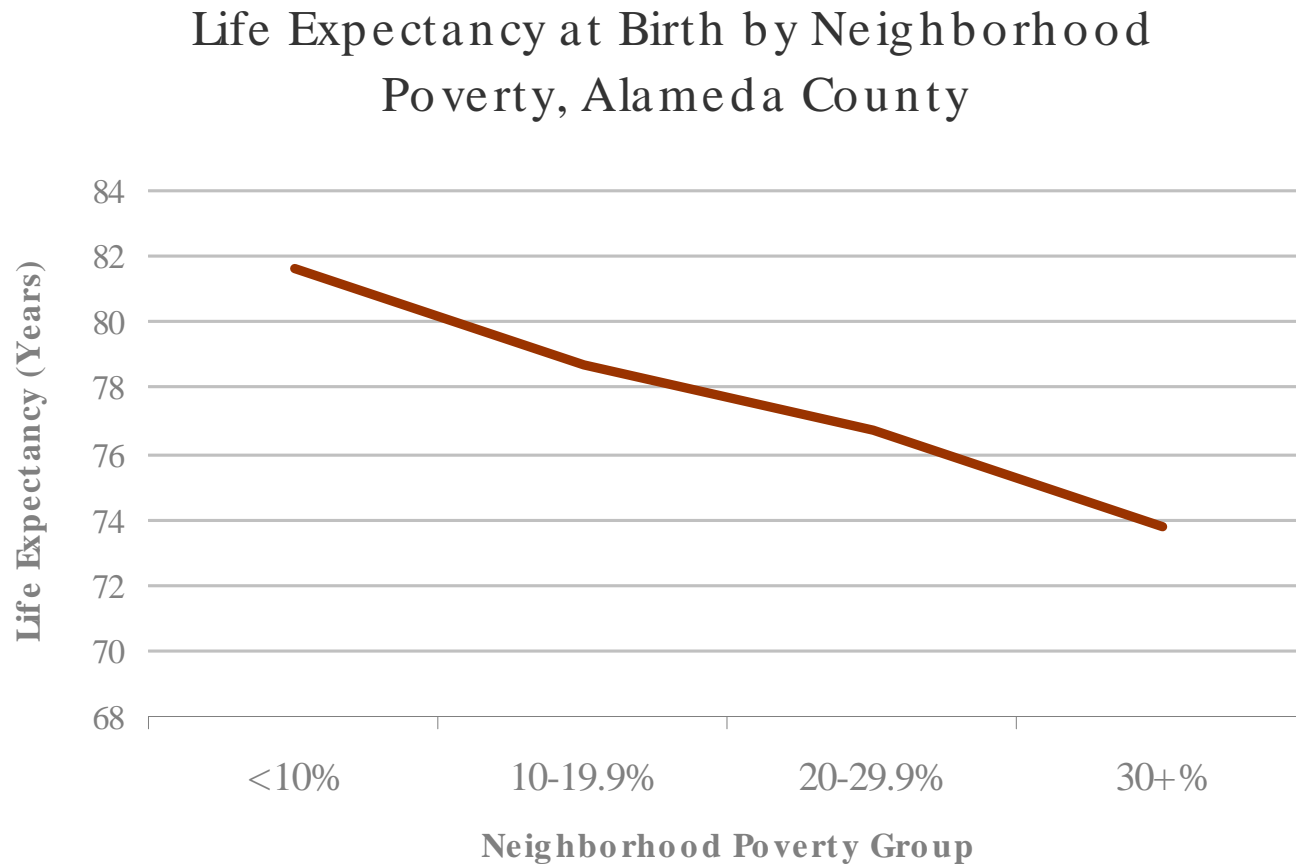
Presentation to the
Congressional Black Caucus

Alameda County Place Matters Team
April 28, 2009



Income Matters

Health Inequities by Neighborhood & Household Poverty

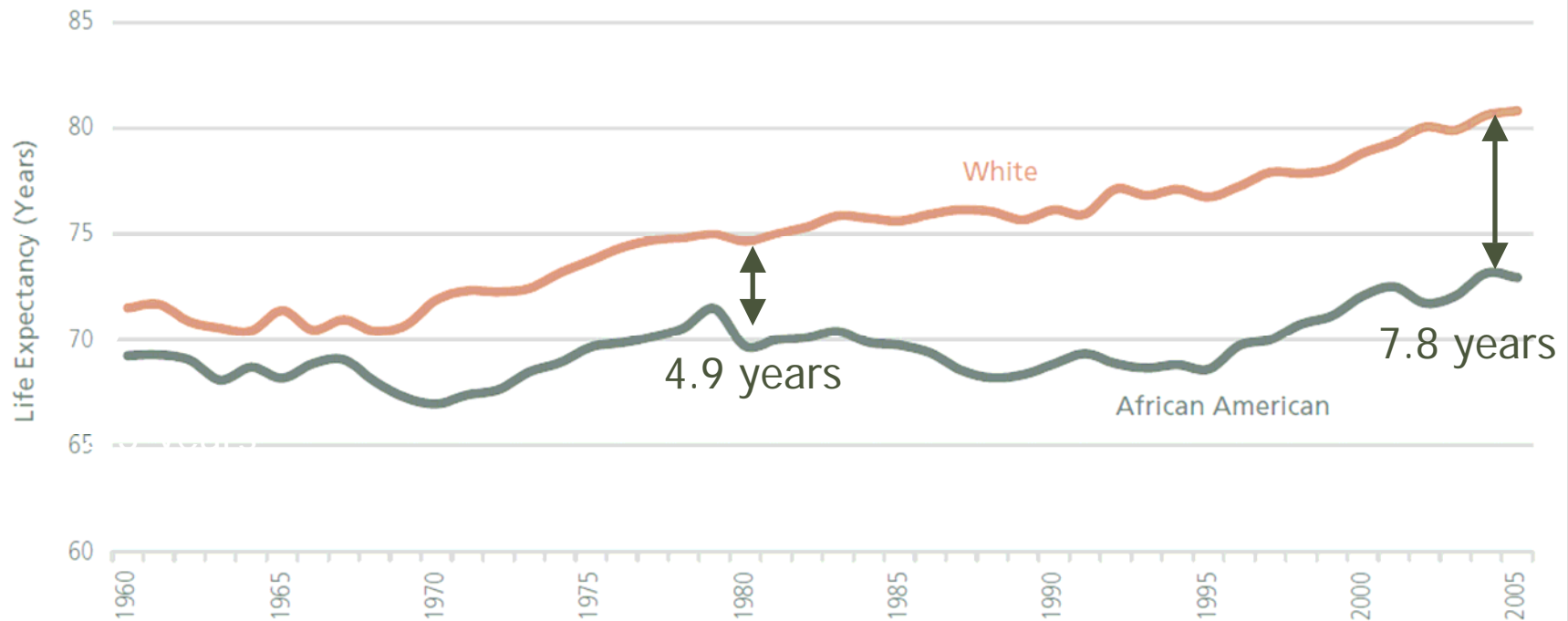


Source: Alameda County vital statistics files, 2001-2005.

Race and Racism Matter

Health Inequities by Race/Ethnicity

Figure 5: Historical Life Expectancy at Birth, Alameda County



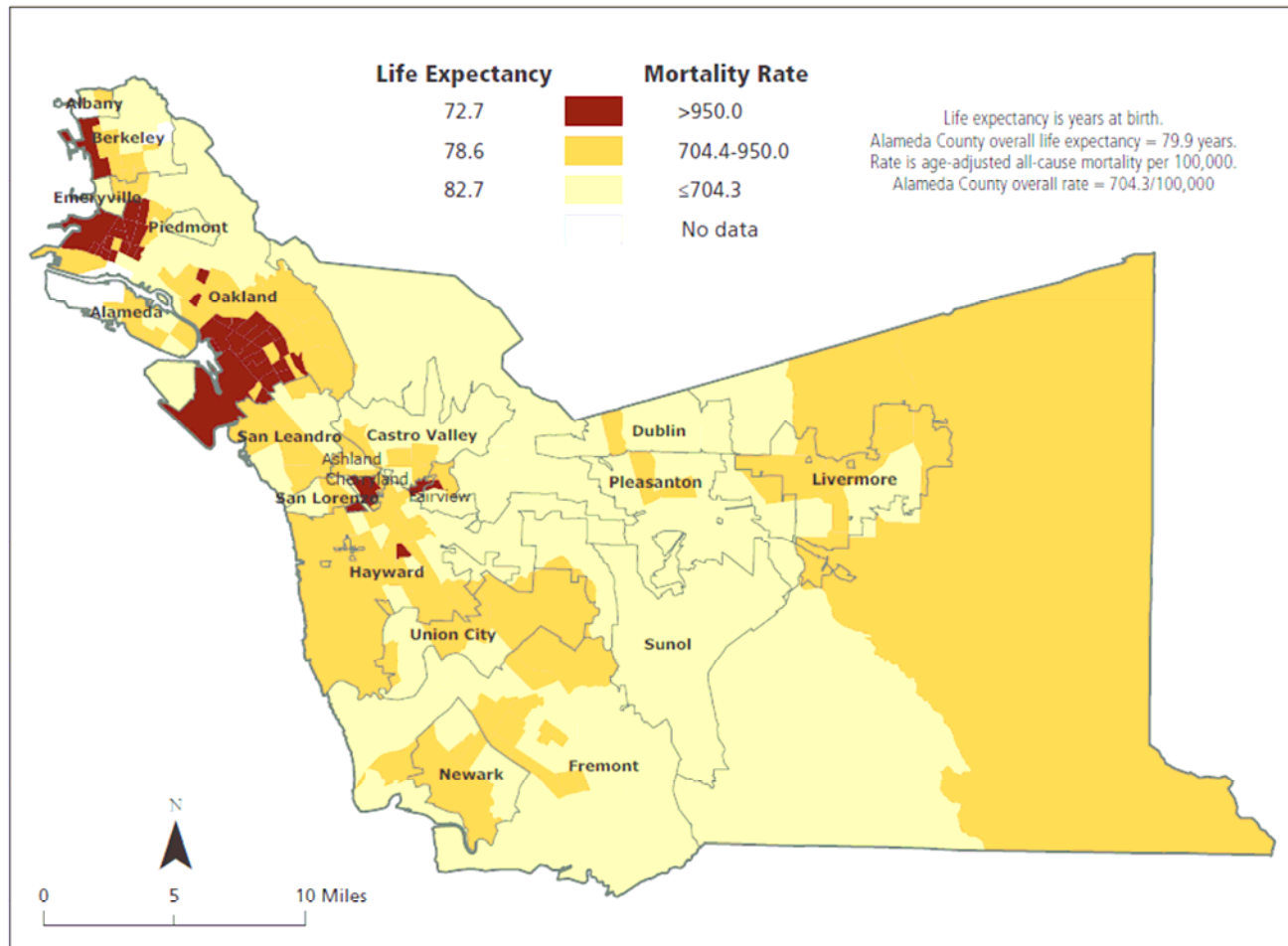
Note: White and African American defined regardless of Latino origin.

Source: Alameda County vital statistics files, 1960-2005.

Place Matters

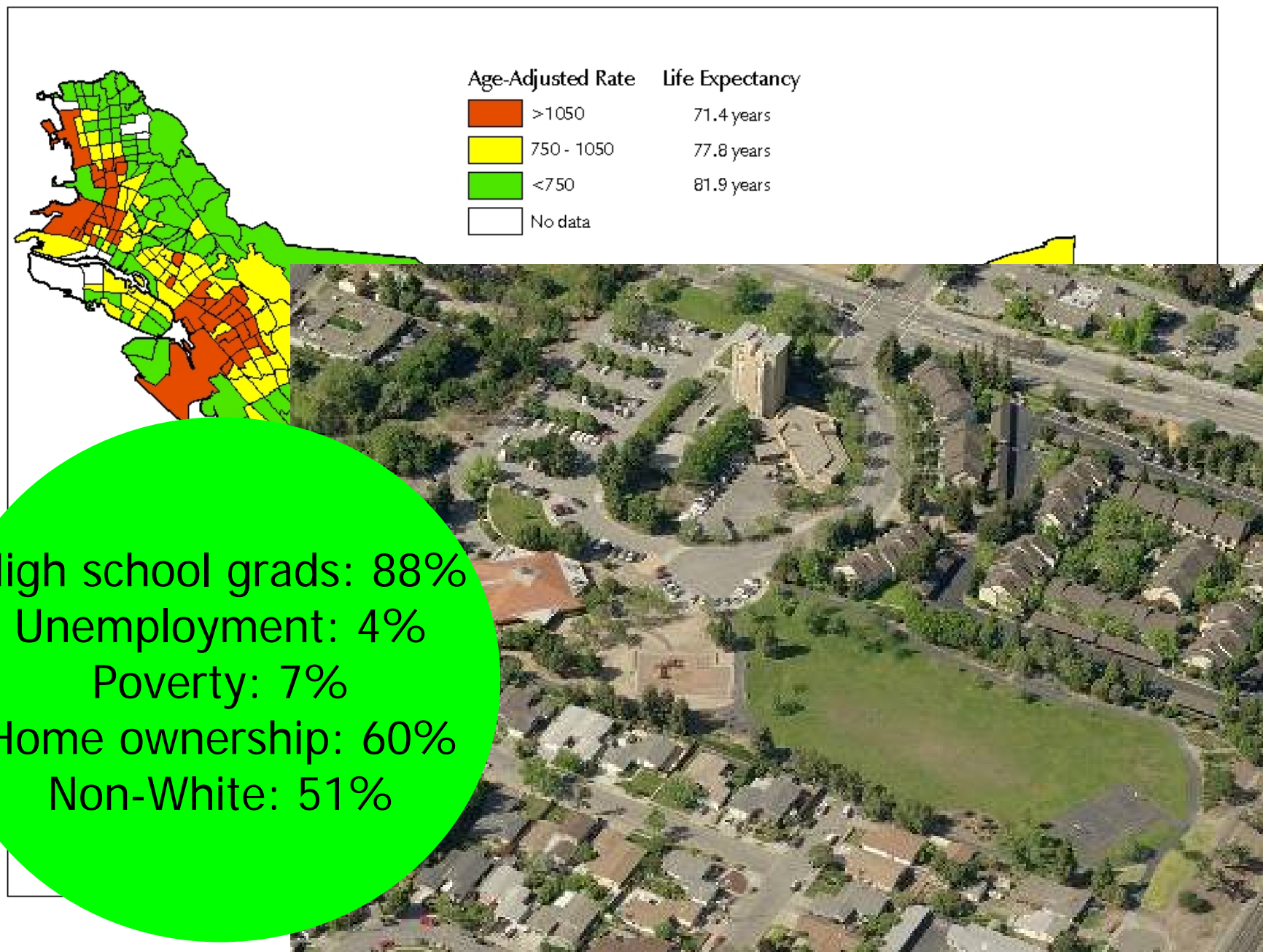
Health Inequities by Where People Live

Map 1: Mortality Rate by Census Tract, Alameda County

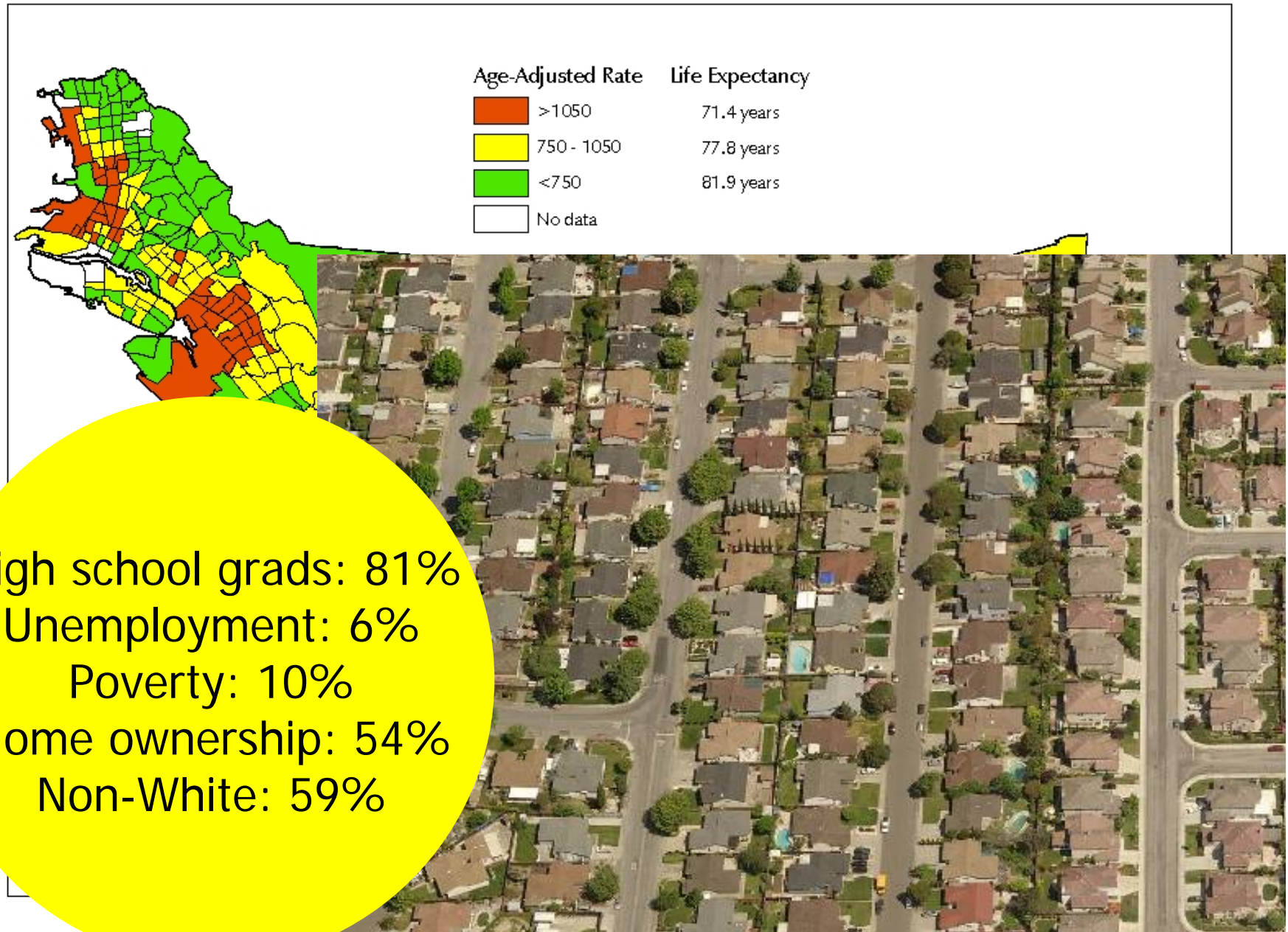


Source: Alameda County vital statistics files, 2001-2005.

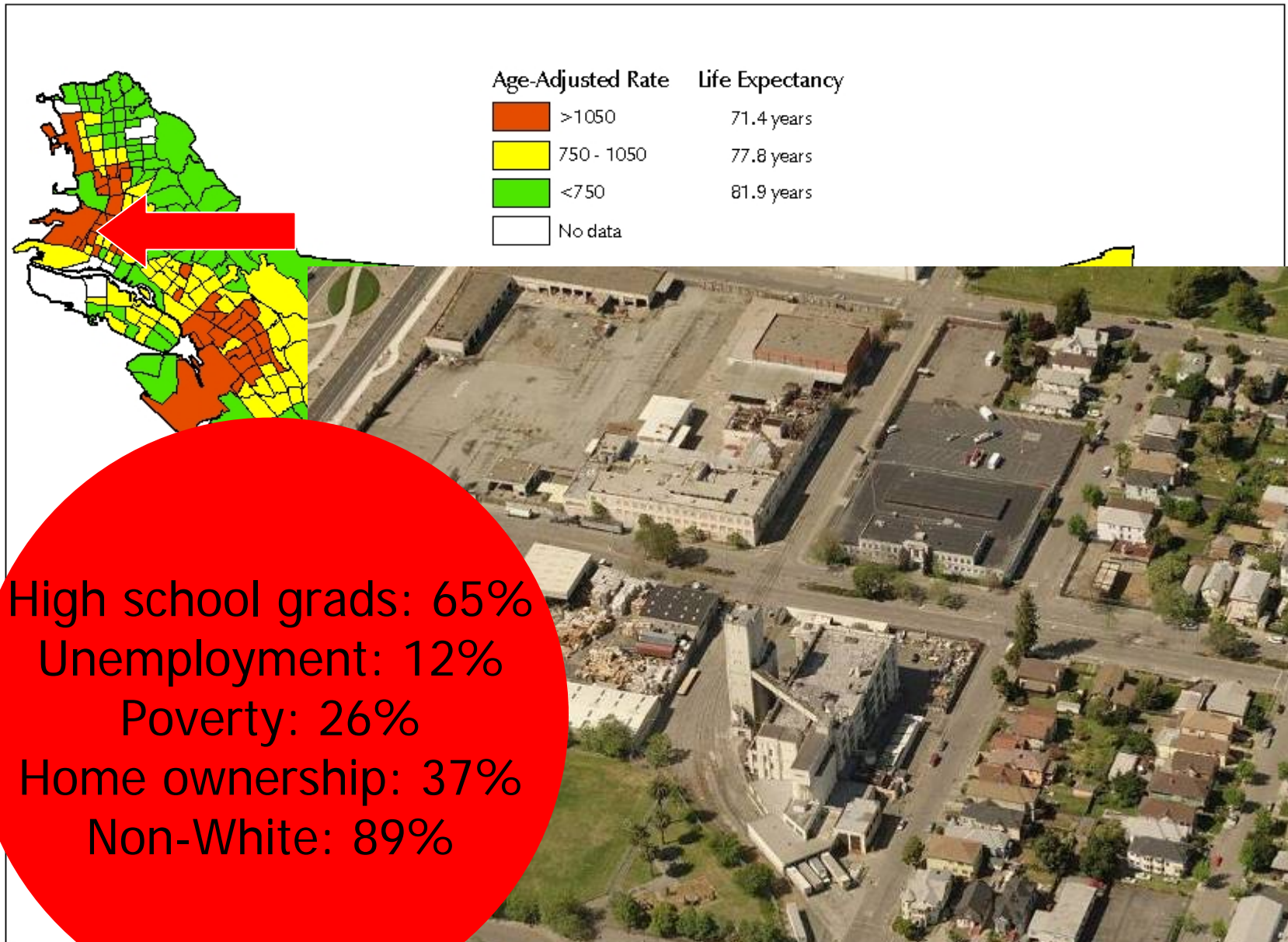
Mortality Rate by Tract



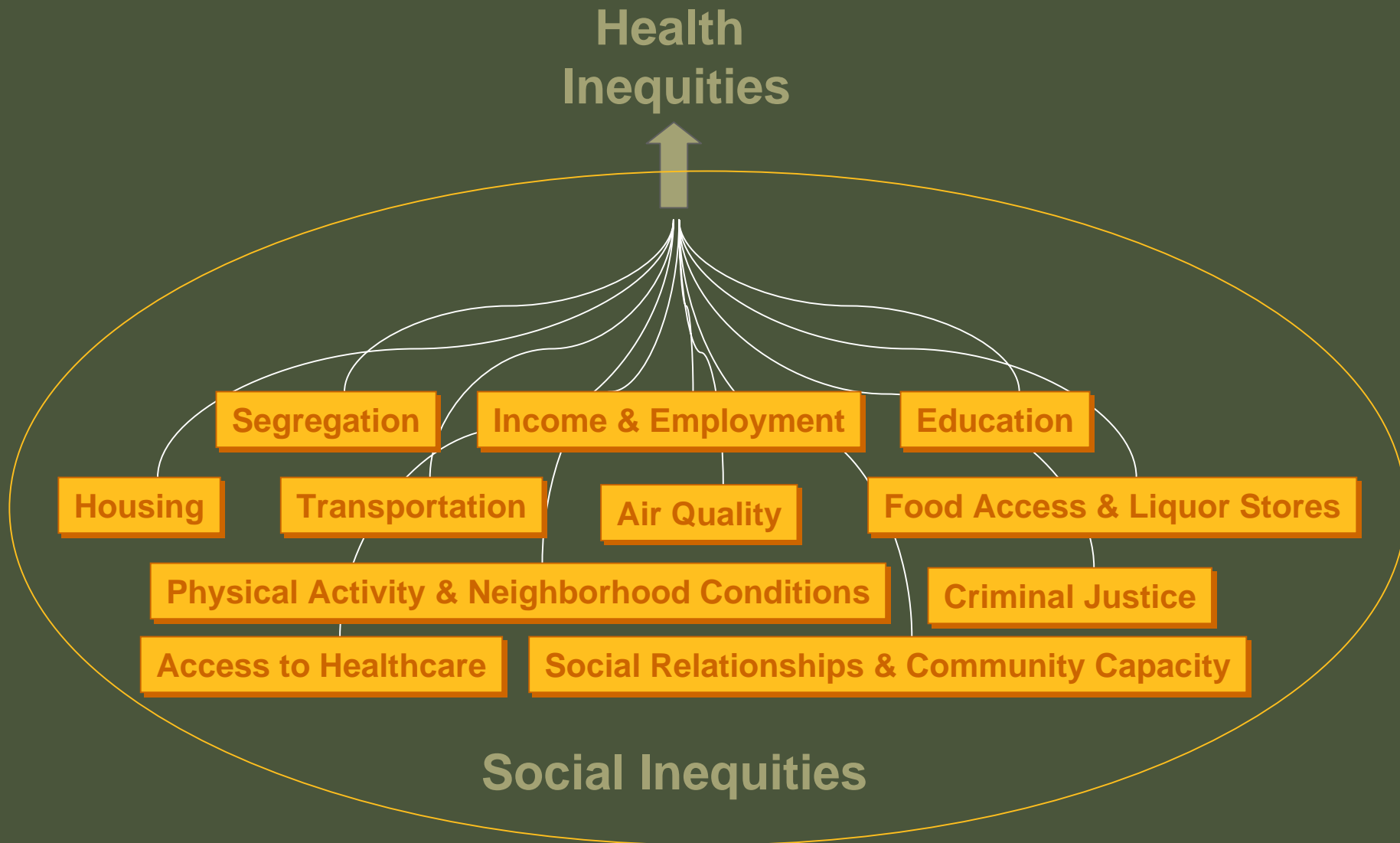
Mortality Rate by Tract



Mortality Rate by Tract



Social Inequities: Root Causes of Health Inequities



ACPHD's Approach to Achieving Health Equity

Programs

Services

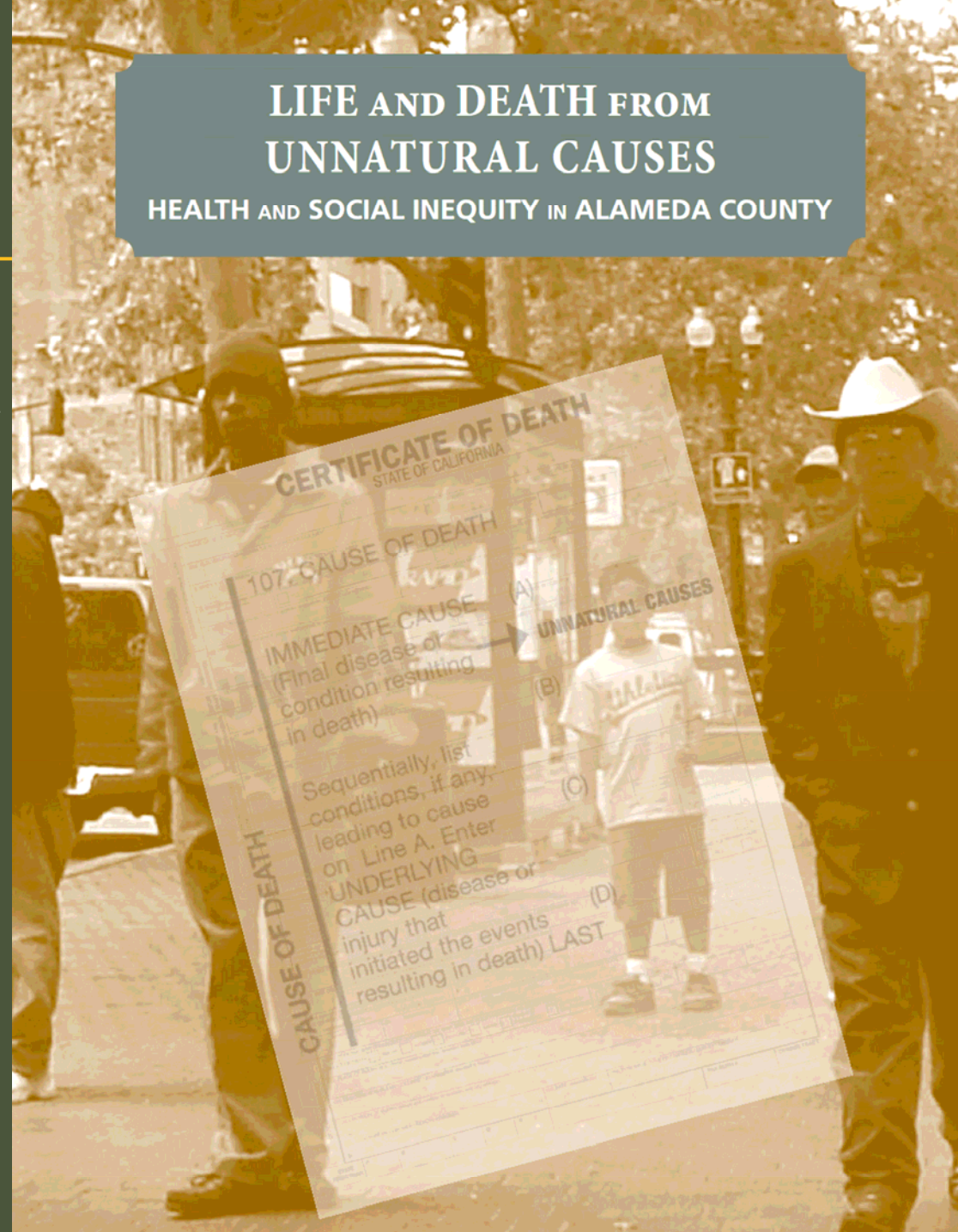
Data and Research

Building the Case

- Report increases:
 - Understanding of the social – health inequity links
 - Support for Place-based health interventions
 - Opportunities for multi-sectoral partnerships
- Find it online:
www.acphd.org

LIFE AND DEATH FROM UNNATURAL CAUSES

HEALTH AND SOCIAL INEQUITY IN ALAMEDA COUNTY



Alameda County Place Matters Team

The Alameda County Place Matters team promotes health equity through a community-centered local policy agenda focused on education, economic development, housing, incarceration, land use, and transportation.

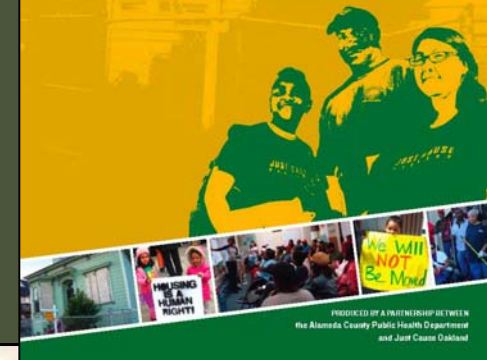
Policy Activities

- Transportation
 - Port of Oakland – Clean Trucks
 - Bus transit fare affordability
- Housing
 - Foreclosure Crisis
 - Transit Oriented Development
- Land Use
 - Estuary Specific Plan
 - Eastshore Power Plant



REBUILDING NEIGHBORHOODS, RESTORING HEALTH

A report on the impact of foreclosures on public health.



Moving Forward

- Analyze health impacts of policy decisions
- Use “place” to increase multi-sectoral work
 - Break down silos
- Support reports on social and health inequities
 - Commission a report in your district
 - Ensure the next Surgeon General’s report includes a health equity focus

Contact Information

Greg Hodge, JD
gregoryehodge@gmail.com

Sandra Witt, DrPH
Deputy Director of Planning,
Policy and Health Equity
510-267-8020
Sandra.witt@acgov.org

