

# Diabetes Treatment Center Howard University Hospital

Gail Nunlee-Bland, M.D.

Director, Diabetes Treatment  
Center

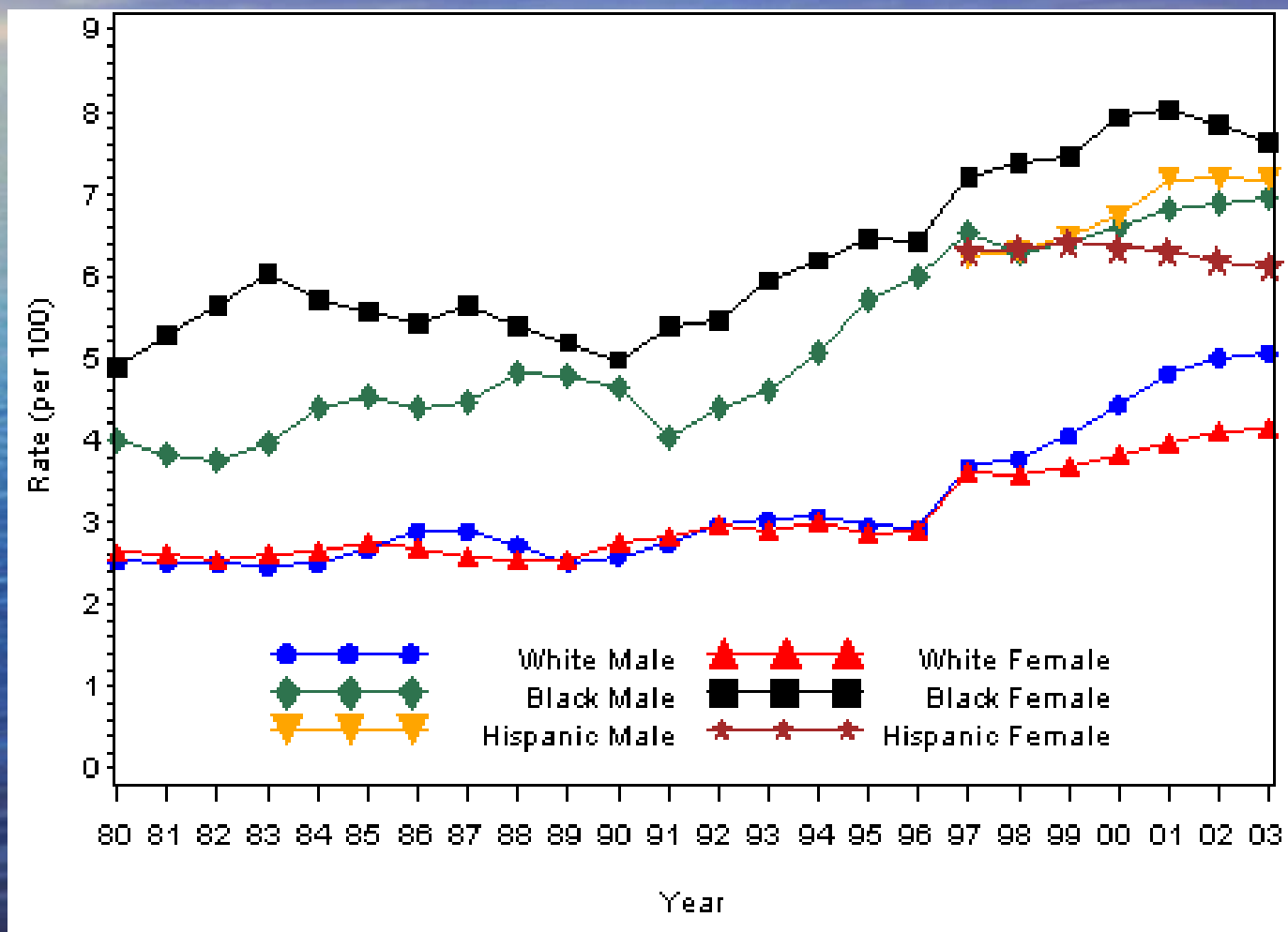
# Disclosers

- Speakers Bureau
  - Sanofi-Aventis
  - Pfizer
  - Merck

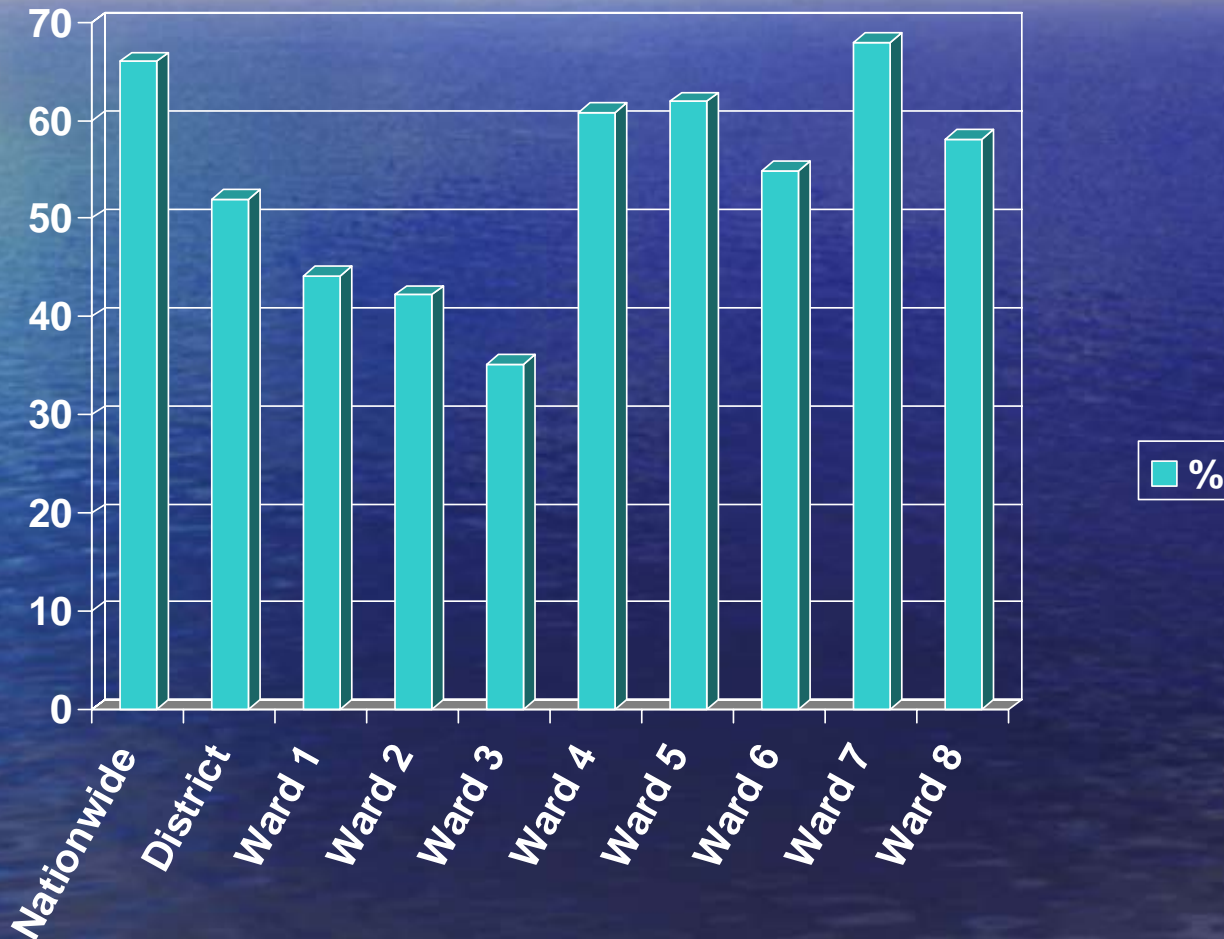
# Thanks

- Pallav Rawal – Pfizer Medical Liason
- Amawha Dawit – HUH Financial analyst
- DC DOH
- Mr. Mogus – HUH MIS
- Janice Harris – RN, CDE
- Howard University Hospital – Management
- Technology Consultants
  - MOTTEP, GTG, ZaneNetworks
  - CliniPro, NoMoreClipboards
- HUH – DTC staff

# Diabetes Rates by Race

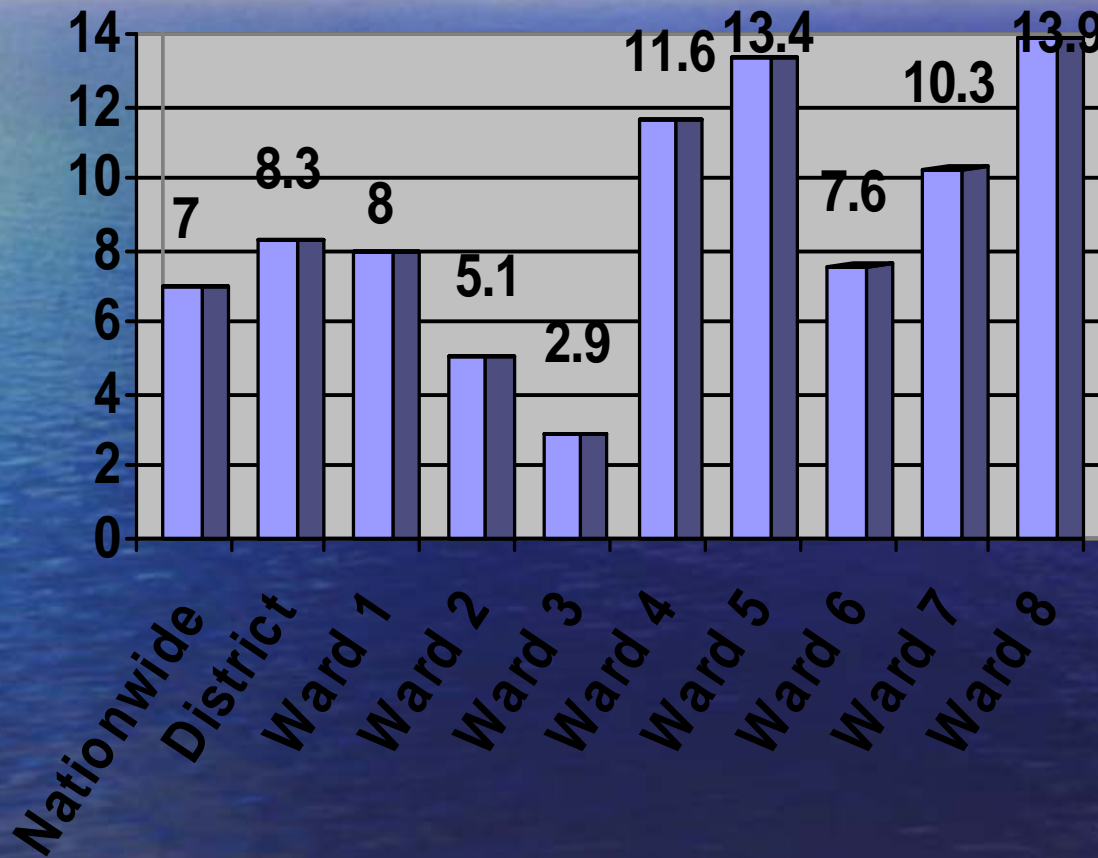


# Overweight/Obesity Rates Washington, DC



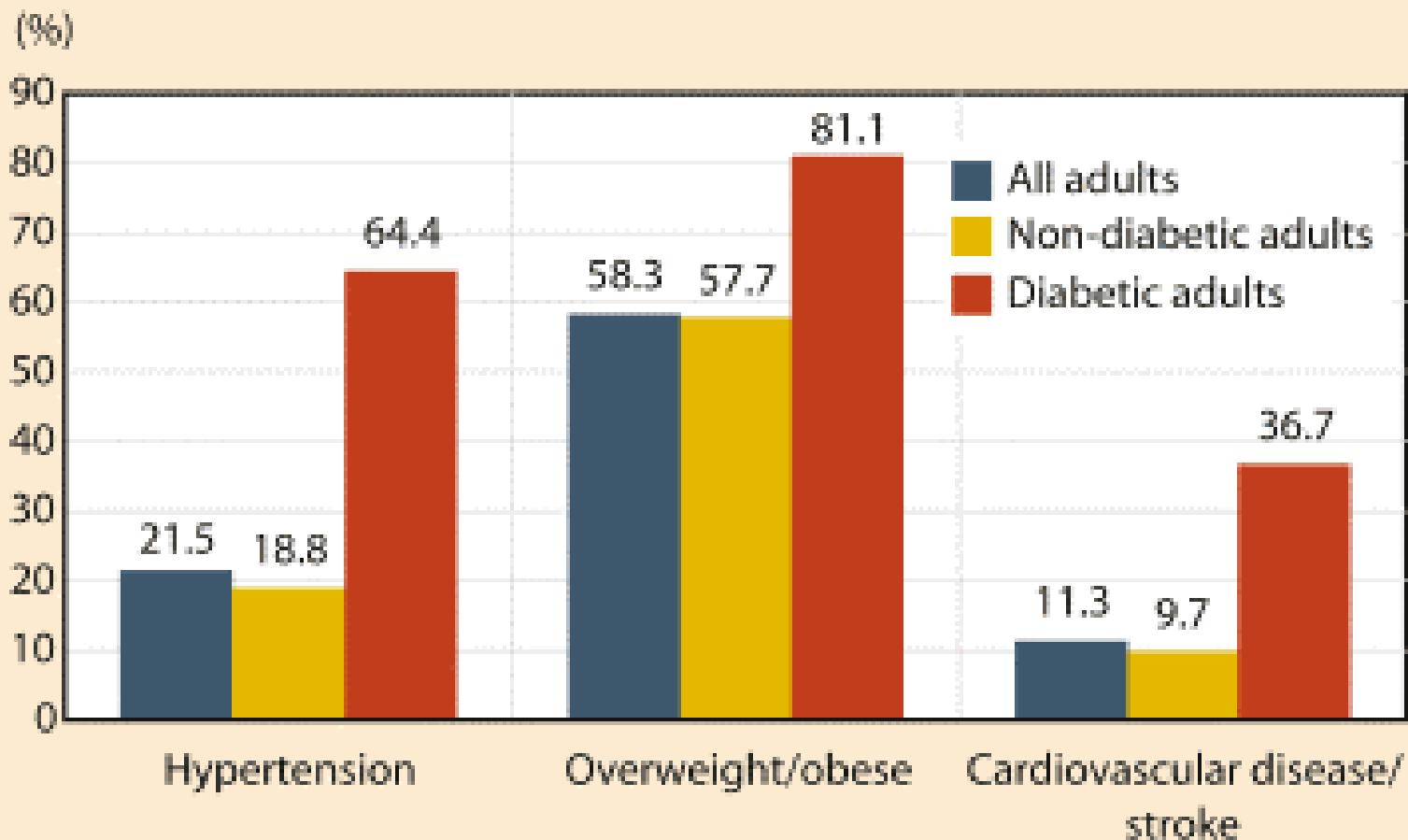
# Diabetes Rates Washington, DC

□ %



## Chronic diseases among diabetics, nondiabetics, and all adult U.S. population, 2003

Add a diagnosis of CVD to diabetes and watch costs explode



Source: Soni, A. *Diabetes Management: Tests and Treatments Among the 18 and Older U.S. Civilian Noninstitutionalized Population in 2003*. Statistical Brief #105. December 2005. Agency for Healthcare Research and Quality, Rockville, Md. <<http://www.meps.ahrq.gov/papers/st105/stat105.pdf>>

# Leading Cause of Death in AA

1. Heart Disease
2. Cancer
3. Stroke
4. Diabetes
5. Unintentional injuries
6. Homicide
7. HIV/AIDS
8. Chronic lower respiratory disease
9. Nephritis, Nephrotic syndrome and Nephrosis
10. Septicemia

# Race Disparity

- Hypertension
- Diabetes
- HIV
- Trauma

# Barriers to Diabetes Management

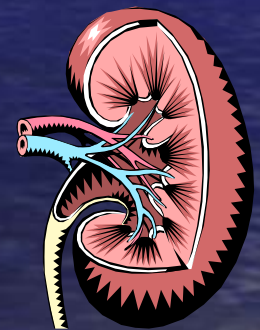
- More than 90% of diabetic patients are treated by primary care
- 15 minutes per visit leaving little time for patient education
- Health care model – provider driven
- More medications available – but no change in HgbA1c, blood pressure and cholesterol control over the past 15 years

# Prevention of Acute and Chronic Diabetes Complications

- Integration of educational, environmental, physiological and financial aspects of diabetes care
- Strategies for patient empowerment
- Technology assisted care



Patient Centered Care



# Diabetes Self Management Education

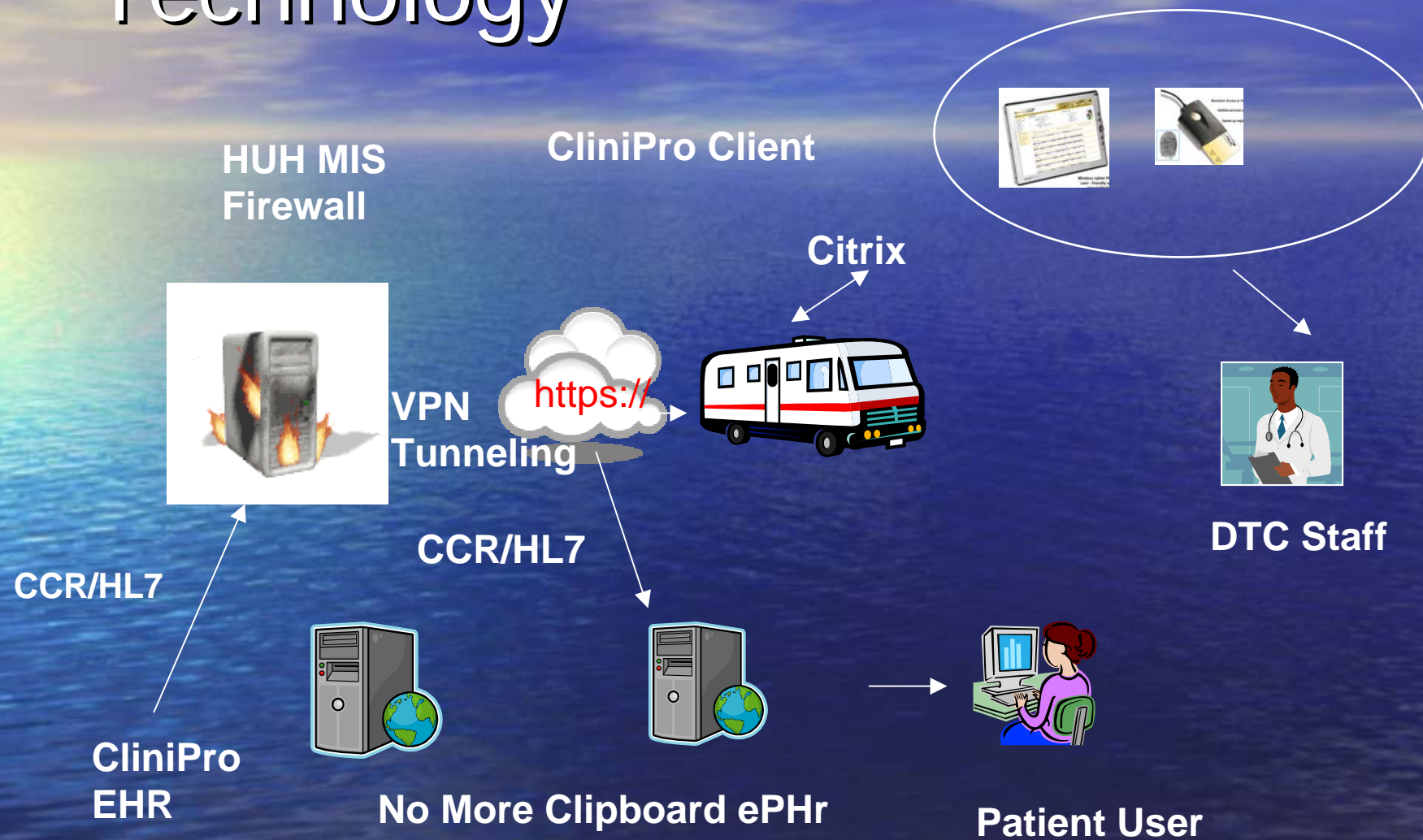
- Achieve self-management related behavior change that leads to improved health related outcomes
- Focus is on behavior change

# Technology Assisted Care

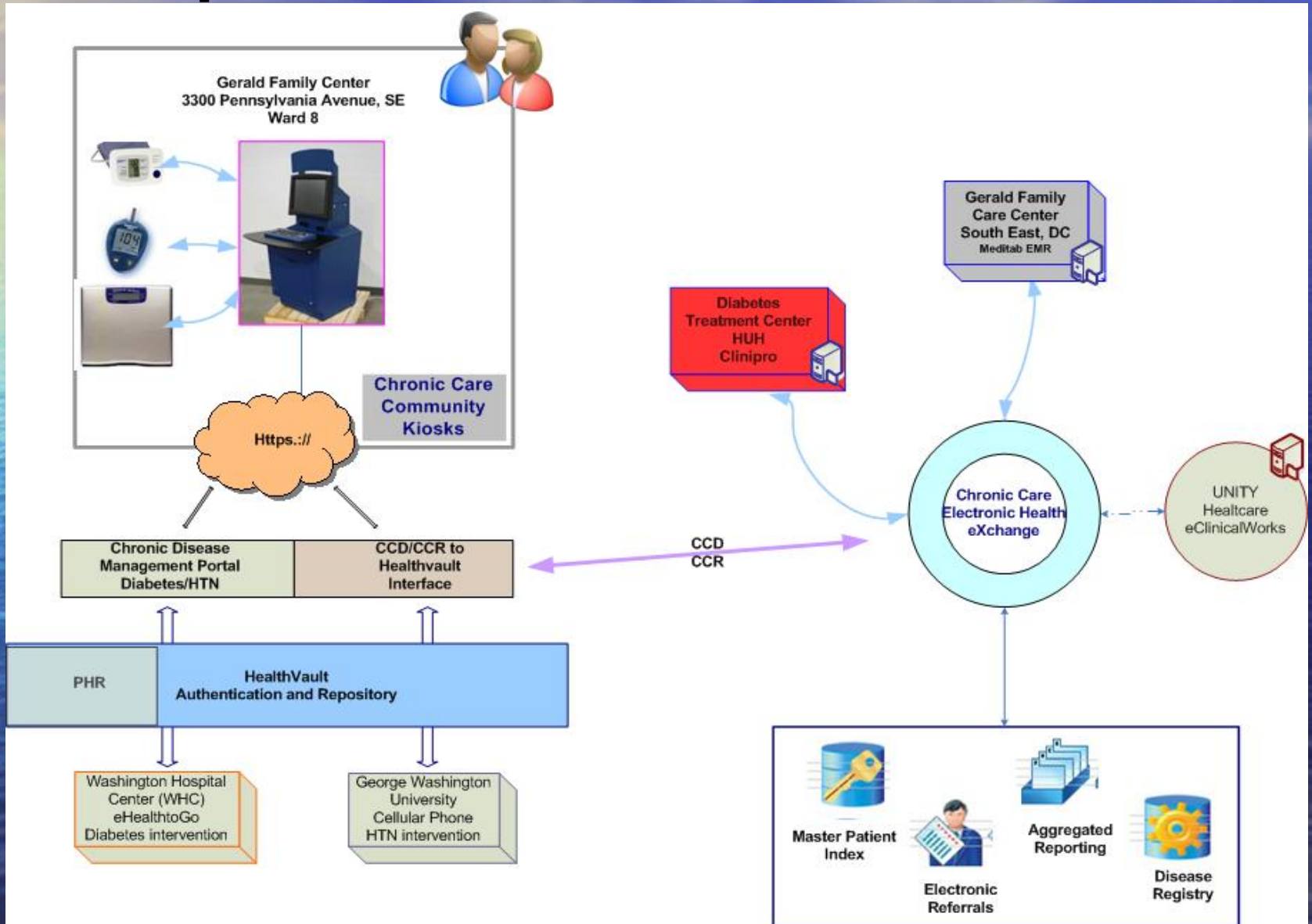
## Howard University Diabetes Treatment Center

- Diabetes Management Software
  - CliniPro™
- Web based health information
- Electronic Patient Health Records
- Telemedicine

# Technology



# Diabetes Education and Technology to Improve Outcomes



# Community Outreach

- Screenings
- Mobile Van into the community
- Remote access electronic medical record systems

HOWARD UNIVERSITY HOSPITAL  
**DIABETES TREATMENT CENTER MOBILE UNIT**



**Diabetes Keys to Control**

- 🔑 Exercise
- 🔑 Nutrition
- 🔑 Education
- 🔑 Medication
- 🔑 Monitoring

Open the Door to  
**Better Health**

**202-865-3350**

[www.huhealthcare.org/diabetes](http://www.huhealthcare.org/diabetes)



HOWARD UNIVERSITY HOSPITAL  
DIABETES TREATMENT CENTER



Registration

WORLD



HUI  
HAWAII  
UNIVERSITY  
HOSPITAL



# National Data of Diabetes Control

- N=10,572
- 41% HgbA1c <7
- 28% BP 130/80 mm/hg
- 44% LDL <100 mg/dl

# DTC Outcomes

4/30/08

Measureable outcome	Baseline	Current
BP <130/80	42.5 %	48.5%
LDL <100	44%	49%
HgbA1c <7	39%	41%

# Thank You

